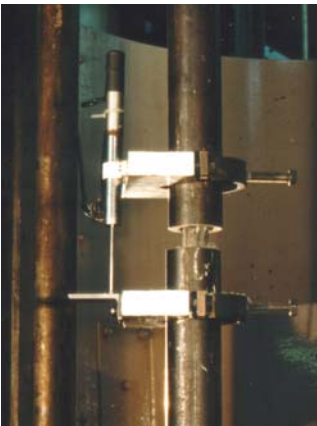




▶ Support System Testing & Assessment



Golder RMT offers a comprehensive service for laboratory testing of support systems and associated items. Facilities include a dedicated test rig incorporating a biaxial cell for realistic laboratory drilling, installation and pull testing of rockbolts and cables in rock cores. This allows precise measurement of the rock/grout bond strength, which is not assessed by conventional laboratory testing. In addition double embedment pull tests and shear tests can be undertaken. We can also commission a full range of mechanical tests on support elements at preferential rates using a NAMAS accredited laboratory.

Our personnel have extensive experience of undertaking assessment of support systems for mining and civil engineering applications and can plan and implement test programs to confirm suitability for use. A full metallurgical investigation service is also available.

We can also offer unbiased advice on optimum design requirements for support and reinforcement systems:

- ▶ Advice on test methods and requirements;
- ▶ Rockbolt and cablebolt system testing on BS 7861;
- ▶ Precise laboratory pull testing for bolts, cables, grouts, resins;
- ▶ Full range of mechanical tests for any support material;
- ▶ Assessment of products and systems for acceptance by users and HMI; and
- ▶ Metallurgical investigations and reports.



For further information please contact:

Peter Altounyan
Technical Director Consultancy
Tel: +44 (0)1283 522201
Email: paltounyan@golder.com

RMT024-S/07-09(V2)

Golder Associates (UK) Ltd
Trading as **Golder RMT**

UK Offices: Belfast, Bretby, Chelmsford, Edinburgh, Falmouth, Leeds, London, Maidenhead, Nottingham, Oxford.
Globally: Operations across Europe, Africa, Asia, Australasia, North America and South America.

www.rmtltd.com
www.golder.com

