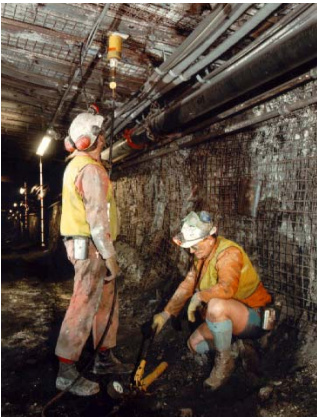




## ▶ Rockbolt Pull Test Equipment



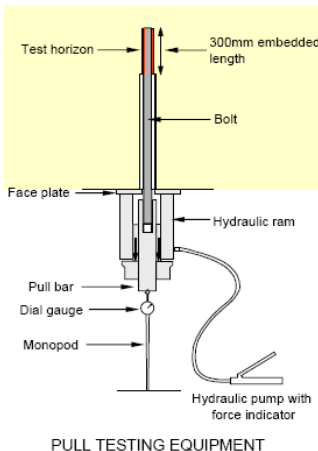
Short encapsulation pull testing is essential to verify rockbolt system performance. Golder RMT supplies all the equipment needed to undertake short encapsulation pull testing on site in mining and tunnelling environments.

- ▶ Calibrated hollow ram, hand pump and pressure gauge
- ▶ Face plate, bearing nut, pull bar and shims
- ▶ Monopod and dial gauge
- ▶ Test instructions and booking sheets
- ▶ Steel carrying case
- ▶ Results analysis and advice service available

We also supply borehole micrometers needed for measuring hole sizes during pull testing.

Pull testing equipment can also be used for proof testing of lifting bolts and rock anchors.

We can provide a full underground pull testing service using our experienced technical services team.



For further information please contact:

Peter Altounyan  
Technical Director Consultancy  
Tel: +44 (0)1283 522201  
Email: [paltounyan@golder.com](mailto:paltounyan@golder.com)